



*RS*  
*Ringwood Hall*

HOTEL & SPA



*Weddings*

# Contents

Introduction .....	3
From this day forward .....	4
<b>Venues</b>	
Garden Pavilion .....	6
Italian Garden .....	7
Portland Suite .....	8
Chatsworth Suite .....	10
Cavendish & Hollingwood Suites .....	12
Ringwood Suite .....	14
Grand Marquee .....	16
Ringwood's Gardens .....	18
Picture Perfect .....	20
Honeymoon Suites .....	22
Garden Secret Spa .....	24
<b>All about Ringwood</b>	
Culinary Profile .....	26
Uniquely Ringwood .....	27
Perfect Planning .....	28
What sets us apart .....	29
Join the Ringwood Family .....	30



## Introduction

What makes Ringwood Hall Hotel & Spa one of the most celebrated wedding venues in the East Midlands?

Perhaps it's the living, breathing heritage of our immaculately presented Grade II-listed manor house and historic gardens.

Maybe it's our 'field to fork' programme which provides only the freshest of ingredients for our wedding breakfasts, vintage afternoon teas and evening receptions.

Or it might be the luxury private couple's suite of our Garden Secret Spa, along with its vitality pool, saunas and steam room.

We like to think it's a blend of all these elements and our eye for detail which have helped create magical Derbyshire weddings for some twenty years.

It's hard to conceive of any other venue in the East Midlands that offers the range of facilities available at Ringwood Hall Hotel & Spa:

- Our 29-acre estate which acts as the perfect backdrop to ceremonies and celebrations all year round.
- The charming interior of our 19th-century manor house, boasting a wide choice of reception rooms, banqueting suites, marquee, garden pavilion and private bars.
- Our selection of gardens, all faithfully restored to reflect their Victorian heritage.
- Our award-winning '5-bubble' spa affording the perfect relaxation ahead of or following your special day.

# From this day forward...

Your wedding day is perhaps the most important day of your life together. It's therefore no surprise that couples in our region leave nothing to chance by entrusting their entire day to our professional and caring team.

Hosting your wedding day at one venue - from your wedding ceremony through to evening reception and overnight stay - means you and your loved one can relax from the very beginning of the day, knowing that your ceremony and celebrations are in very safe hands.

## CEREMONY SETTINGS

Whether you dream of the grand and elegant setting of a historic manor house or a picture-perfect garden setting, our licensed suites will exceed any expectation. Simply stunning settings to utter the immortal words 'I do'.





## *Garden Pavilion*

### THE PERFECT SETTING TO SAY 'I DO'

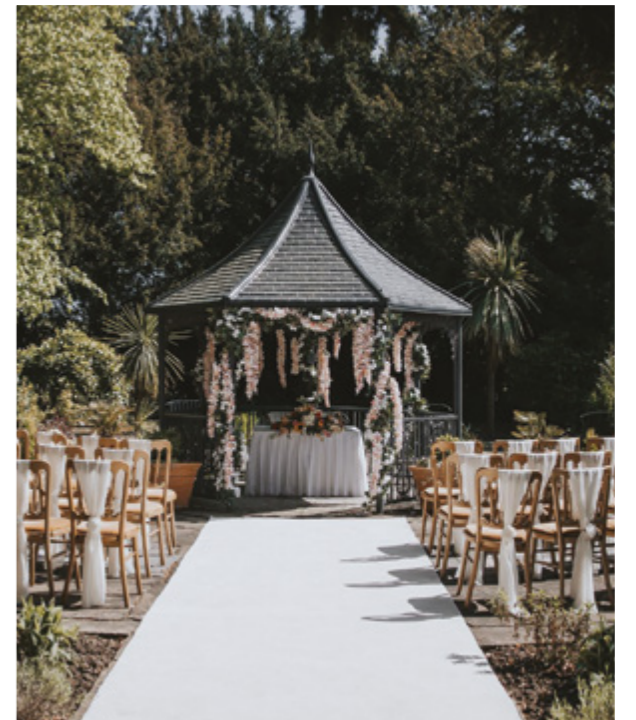
Our magnificent gardens have been the celebrated centrepiece of our manor house for over 200 years. From rolling parkland to secret woodlands and lawns, Ringwood's estate presents the perfect outdoor canvas for stylish wedding photographs in all seasons.

What better way to appreciate the beauty and space of our beautiful outdoors than to say your vows in the Garden Pavilion? Suitable for both small intimate wedding ceremonies and ceremonies on a larger scale.



## *Italian Garden*

Our beautiful Italian Garden has been transformed to provide a picture perfect setting for an intimate garden ceremony. From dawn 'til dusk, this beautiful pergola and its tranquil setting will leave you with memories to last a lifetime.





## Portland Suite

### TIMELESS ELEGANCE

With its large multi-paned windows, the Portland Suite accentuates the light afforded by its corner aspect.

Whether you're planning an intimate or larger ceremony, our Portland Suite will represent the bygone era of our magnificent manor house. It is the perfect choice for ceremonies, wedding breakfasts and evening celebrations.

The Portland Suite is able to accommodate the following maximum capacities:

- Civil ceremonies: 80 guests.
- Wedding Breakfast: 50 guests.
- When interconnected with our Chatsworth Suite for evening celebrations: 80 guests.



## *Chatsworth Suite*

### **LIVING, BREATHING HERITAGE**

Heritage simply lives and breathes throughout this room and its original Georgian marble fireplace, high ceilings and chandeliers. With its large multi-paned windows acting as the perfect frame for our sweeping lawns, the Chatsworth Suite effortlessly captures all the elegance you expect from our Grade II-listed manor house.

A wonderful choice for civil ceremonies and private dining, it is able to accommodate the following maximum capacities:

- Civil ceremonies: 80 guests.
- Wedding breakfast: 50 guests.
- When interconnected with our Portland Suite for evening celebrations: 80 guests.



## Hollingwood and Cavendish suite

Our Cavendish & Hollingwood suites are the perfect setting for a more intimate wedding celebration.

With large bay windows and views over our award winning gardens and the surrounding countryside, these light and airy rooms are simply beautiful.

The Cavendish suite is able to accommodate the following maximum capacities

- Civil ceremonies up to 24
- Wedding breakfast up to 12

The Hollingwood suite is able to accommodate the following capacities

- Civil ceremonies up to 60
- Wedding breakfast up to 40



OUR RINGWOOD SUITE IS QUITE  
SIMPLY THE GRANDE DAME OF  
OUR GRADE II-LISTED BUILDING



## Ringwood Suite

### CLASSIC ELEGANCE

Recently restored to its period features and with exquisite chandelier lighting and high multi-paned windows, it exhibits all the glamour of a vintage ballroom. Further light and space are afforded through the suite's very own conservatory and extensive outdoor terrace. It is the conservatory, private bar facility and direct access to our extensive grounds that present an opportunity for guests of all generations to find their perfect spot.

With mood lighting to match your chosen colour scheme transforming the beautiful draped domed ceiling, the Ringwood Suite embodies pure timeless elegance.

The Ringwood Suite is able to accommodate the following maximum capacities:

- Civil ceremonies: Between 60 and 130 guests.
- Wedding breakfasts: Between 60 and 130 guests.
- Evening celebrations: Up to 250 guests.





# Garden Marquee

## GARDEN HIDEAWAY

Tucked away in its own beautifully landscaped award-winning gardens and with breathtaking panoramic views of the surrounding woodland, Ringwood's Garden Marquee presents a truly unique setting.

The Grand Marquee offers:

- a bar and lounge area with ivory pleated linings and swags
- twinkle starlit lighting
- private adjacent parking
- luxury toilet facilities

The Grand Marquee is able to accommodate the following capacities:

- Wedding breakfasts: Between 80 and 180 guests.
- Evening receptions: Between 120 and 350 guests.
- International catering options for International Weddings: Up to 400 guests.



THE GRAND MARQUEE  
IS AVAILABLE FROM  
APRIL TO OCTOBER

# Ringwood's Gardens

## SIMPLY PICTURE PERFECT

As many happy couples and their guests have testified over the years, our estate is simply stunning. Maintaining such majesty has been a labour of love for our resident gardening team; it's almost 30 years ago since our programme to restore the gardens to their Victorian roots first began!



## Kitchen Gardens

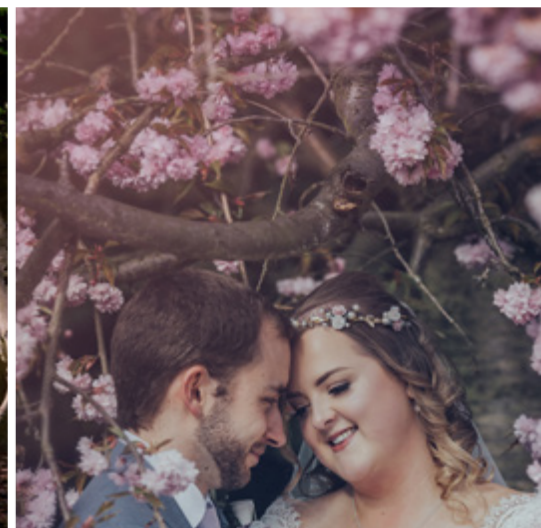
Paying full respect to the heritage of our Victorian kitchen gardens, our culinary team work tirelessly to ensure that our menus are always created from our seasonal crops of root vegetables, salad vegetables, berry fruits and herbs. The result? A flavoursome 'field to fork' programme where air miles are replaced simply by footsteps.

## Space to breathe

Space is something that our 29 acre estate has in abundance. Space to catch up with the most special people from your celebrations but space too, to find precious quiet moments as a couple to reflect on the day as it unfolds.

# Picture-Perfect

At every angle, our estate provides a different backdrop. From rolling parkland to Victorian gardens, secret woodlands and lawns, our estate presents the perfect outdoor canvas for stylish and personal wedding photographs in all seasons.





## Honeymoon Suites

### YOUR VERY OWN LOVE NEST

Why not make your perfect day complete by taking advantage of our traditional and contemporary luxury accommodation?

Our large property boasts a wide range of rooms with characterful features ranging from homely fireplaces to relaxing jacuzzis and free-standing stone & roll top baths.

Quiet time too can be found in our larger suites where you can spend time with your most special of guests and prepare for your wedding day.



## Guest Rooms

### YOUR DAY INTO A STAY

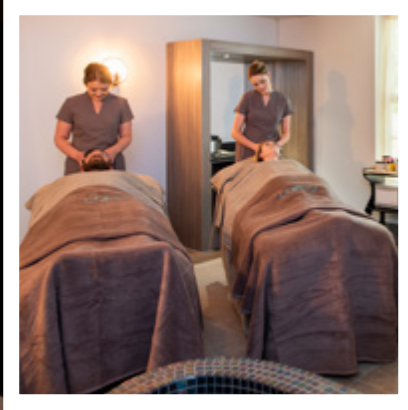
Welcoming your guests in joining you to stay overnight ensures they too have a lasting memory of your special day.

Each one of our 74 well-appointed bedrooms in our beautiful manor house is designed with the upmost comfort in mind.

All rooms have complimentary WiFi, a feature desk area, tea/coffee making facilities, complimentary toiletries, hairdryer and iron & ironing board as standard.

Concessionary rates that include breakfast apply for the duration of your celebrations.





# The Garden Secret Spa

## TIME TOGETHER

### RESTORATION

With its panoramic view of our woodland gardens, our luxurious spa retreat is the perfect place to soothe the body and relax the mind. Prepare for or reflect on your big day through enjoyment of our luxury facilities:

- Vitality Pool heated to optimum temperature
- Herbal Sauna infused herbs handpicked from Ringwood's kitchen garden
- Himalayan Salt Sauna to melt away muscle tension
- Foot Spas with stimulating reflexology jets
- Blossom Steam Room with uplifting citrus essence
- Ice Fountain to stimulate cell regeneration
- Serenity Sleep & Relaxation Lounge for the perfect place to unwind the mind

### REJUVENATION

Enjoy precious time for two with a treatment in our Luxury Private Couple's Suite. Savour the shared experience of a body treatment with Lola's Apothecary or a Pevonia facial, and get 'photo ready' with our make-up and hair services.

# Culinary Profile

## FROM FIELD TO FORK

The Ringwood team are fully committed to embracing the seasonality of Ringwood's outdoor environment. Nowhere is this more apparent than in our kitchens. Vegetables, berry fruits and herbs are grown extensively in our grounds and add the freshest of ingredients to our menus.



## PREPARED WITH LOVE

We believe love and care should shine through to your guests as you share together your first meal as a married couple. Whether you opt for a sit-down wedding breakfast, vintage afternoon tea or evening buffet, our culinary team are expert in developing menus that perfectly complement the style of your day.



# Uniquely Ringwood

## OUR COMMITMENT TO YOU

It is the magnificence of our manor house and gardens that have undoubtedly made Ringwood Hall Hotel & Spa a wedding venue of choice for our region's couples for some twenty years.

It's a magnificence that's evident from the moment visitors step into our 19th-century manor house and feast their eyes on our spectacular dome-roofed reception and sweeping staircase.

This living, breathing heritage extends into every corner of our property,

with our wide choice of reception rooms, banqueting suites, private bars and honeymoon suites each offering their own unique character.

Yes, we're considered one of Derbyshire's most beautiful wedding venues. But we like to think we offer so much more than that. With our years of expertise as a leading wedding venue, we have an innate understanding that it's the personal touches that create the perfect wedding day.

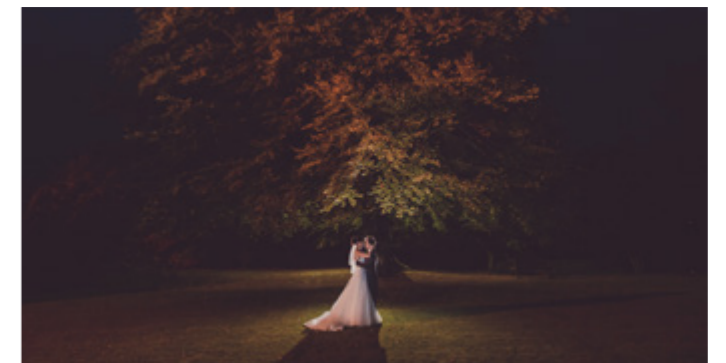


# Perfect Planning

Creating and managing the perfect wedding is an alchemy of planning, precision and passion. Our 20-year pedigree in hosting wedding ceremonies and celebrations affords you the peace of mind that our Master of Ceremonies and supporting team are expert in planning for and addressing every eventuality on your wedding day.

# What sets us apart?

- Choice of suites to suit any style, with a perfect offering of different function rooms plus our grand marquee, garden pavilion and Italian garden.
- Our Garden Secret Spa which is the only one in Derbyshire to have been awarded the highest rating of '5 bubble' by the Good Spa Guide.
- On-site hair and make-up services in the comfort of your own suite.
- On-site gym with our personal trainer available for 1:1 coaching sessions.
- Pet sitting service with a guest appearance from your beloved pooch just in time to join the wedding photographs.
- Helipad. Looking for a dramatic entrance to your wedding ceremony or celebration? How about an 'over the top' entrance by helicopter?
- Forever innovating with guest experience firmly at the heart of our ongoing plans. Our £2 million refurbishment has introduced new facilities and new exciting projects in the pipeline.





# Join the Ringwood Family

**TODAY, TOMORROW, FOREVER...**

Sealing your love through marriage is only the start of a new chapter in your life together.

At Ringwood Hall Hotel & Spa we'd like to help celebrate the future milestones of your journey, from Paper to Diamond wedding anniversaries and beyond, christening celebrations and significant birthdays.

Choose Ringwood Hall Hotel & Spa as your wedding venue and join our exclusive Ringwood Couples membership. Where relating specifically to you and/or your spouse you are invited to receive:

- Complimentary accommodation upgrades for life.
- Complimentary room hire for any function room to celebrate future celebrations.
- 10% discount which can be used either for accommodation, dining or spa.

Subject to availability.





# Weddings at Ringwood

NEVER STANDARD. ALWAYS SPECTACULAR.

Our talented Wedding Coordination team are on hand to help you design a wedding day that is perfectly yours.

## Ringwood Hall

HOTEL & SPA



Ringwood Hall Hotel & Spa | Brimington | Chesterfield | Derbyshire | S43 1DQ

T: +44 (0)1246 280077 | E: [weddings@ringwoodhallhotel.com](mailto:weddings@ringwoodhallhotel.com)

[www.ringwoodhallhotel.com/weddings](http://www.ringwoodhallhotel.com/weddings)



A huge thank you to our recommended wedding suppliers for helping supply images for our brochure

Chris Loneragan Photography  
[weddings@clphotography.co.uk](mailto:weddings@clphotography.co.uk)

Chris Smith Photography  
[www.chrissmithphotos.co.uk](http://www.chrissmithphotos.co.uk)

Antoni Wigley  
[www.antoniwigleyphotography.com](http://www.antoniwigleyphotography.com)

Marie Anson Photography  
[www.marieansonphotography.com](http://www.marieansonphotography.com)

Shakespeare Photography  
[www.shakespearephotography.co.uk](http://www.shakespearephotography.co.uk)

Shoot Photography & Film  
[www.shoot-lifestyle.co.uk](http://www.shoot-lifestyle.co.uk)